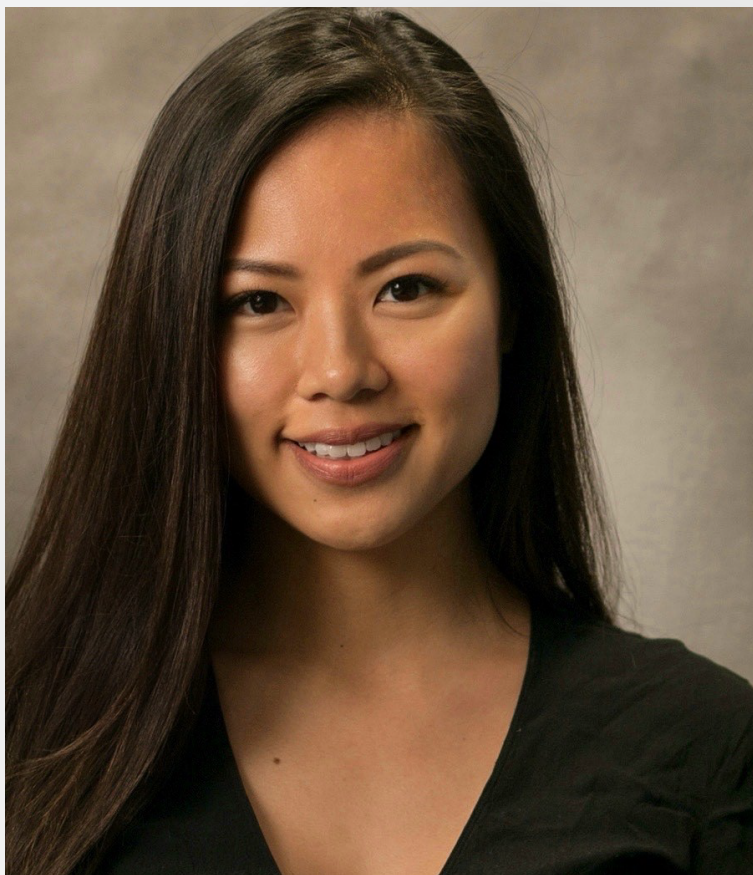


## Career Spotlight:

Crystal Lye

CBRE Advisory &  
Transaction Services –  
Retail | Associate



“ It's been one year since graduation and I am amazed at how things have unfolded since I chose to pursue real estate at the University of British Columbia. Three internships, three scholarships, one case competition, and a ton of inspiring connections later, I've found myself in a challenging, exciting brokerage role at CBRE in New York - an outcome that CREW played a truly integral part in. CBRE's valuable partnership with CREW gave me and other incredible young women a unique opportunity to pursue a career with the company in a North American city of our choice. This opened up a

door for me that otherwise might not have existed - relocating to a new city and new market for a new life chapter. While I sometimes still feel like I'm dreaming, the learning curve hasn't always been easy; however, what matters is tackling these challenges in an environment with supportive mentors, a collaborative network, and an attitude that turn failures into lessons (and eventually strengths) as you progress in your career. I feel unbelievably lucky with my brokerage/real estate journey to date and look forward to new challenges and rewards to come!



There are many ways to explore careers and research specific requirements for the position in which you are applying. If you would like information on how to identify a professional in a specific area of expertise, consult your career counselor, advisor or professional. For additional information, email [Debbie@careersbuildingcommunities.org](mailto:Debbie@careersbuildingcommunities.org)